

User manual of the datamatrix codes reader White Reader®



Contacts

Service commercial

Tel: 03 27 34 30 73

Fax: 03 27 21 44 45

Email : info@athmedical.com

Mathieu COTEROT, Ingénieur R&D

Tel : 03 27 34 30 73

Fax : 03 27 21 44 45

Email : mcoterot@implantrack.com

The White Reader® is a Datamatrix codes reader, **specifically** designed to read **engraved codes on surgical instruments, as part of sterilization in hospitals.**

It has been **designed by our R&D team**, in partnership with sterilization professionals, and it is **manufactured on our site in DENAIN.**

The design allows the user to keep **hands free**, and a better organization of the work surface, thanks to an automatic reading trigger.

The three lighting colors permit to read immediately every Datamatrix code, **whatever the support matter or the engraving process used** (Lazer, indent dot marking, Infodot).

A good lighting **markedly** improves the camera reading productivity. A clearer view leads to a **faster reading of codes** in sterilization process, and a real help for the sets reconstruction.

The White Reader® innovative lighting is covered by an **international patent.**

✓ Supplies list :

Packaging unit, the White Reader® is delivered in 1 package.

Dimensions: 30.5 x 25.5 x 9.5 cm

Package White Reader®

- The White Reader®
- The mains adaptor/substation 24V and its electrical cord – cable 1
- The wire to connect the White Reader® and your PC – cable 2
- The adjustable base and its 2 fixing screws. This is an anti-slip base, that possess two ball joint that can be tighten up with a scroll wheel.
- The installation and user Manual.

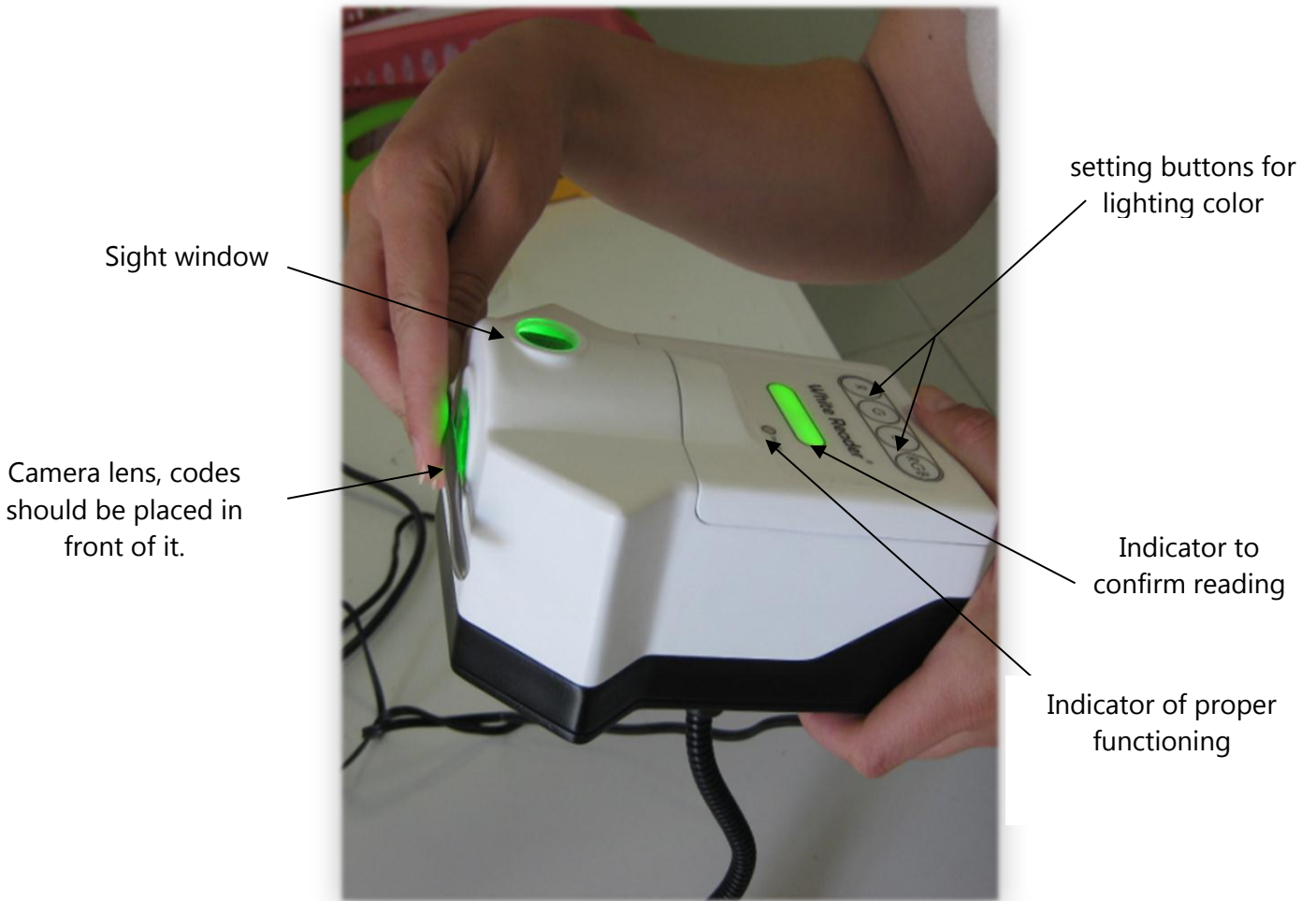
Cable 1



Cable 2



✓ White Reader® global diagram



✓ **Wiring procedure :**

1st step :

Connect the mains adaptor (cable 1) to the White Reader® connector.



2nd step :

Connect the electrical cord to the substation – **Don't plug to the power point at this step**



3rd step :

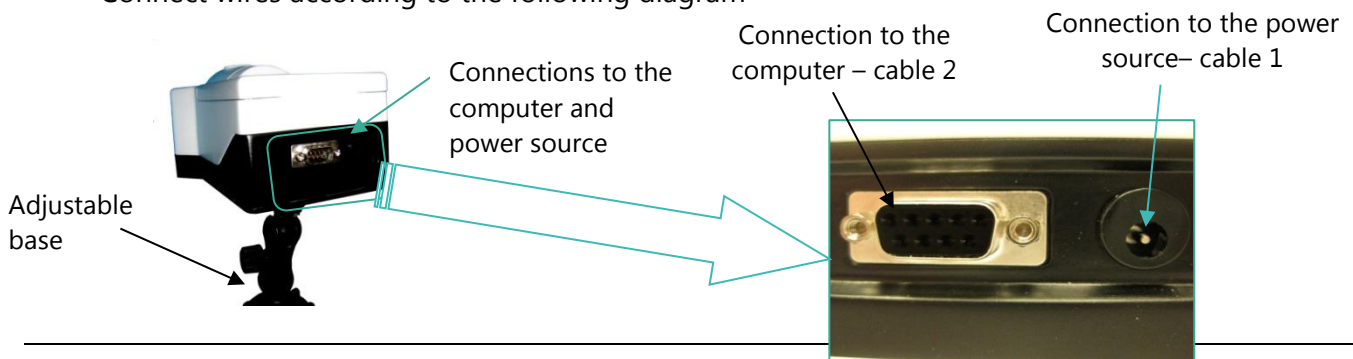
Connect the wire (cable 2) to the White Reader®, then to the computer.

4th step :

Plug to the power point : 220 volts standard.

• **Connections PLUG & PLAY :**

Connect wires according to the following diagram



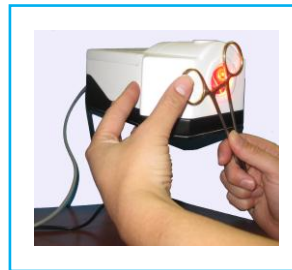


Thanks for using **EXCLUSIVELY** cables and mains adaptor supplied by ATH Medical with the White Reader.

✓ Ergonomy, at the heart of the problem :

The design allows the user to **keep hands free** while reconstructing the set.

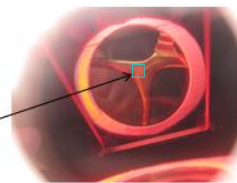
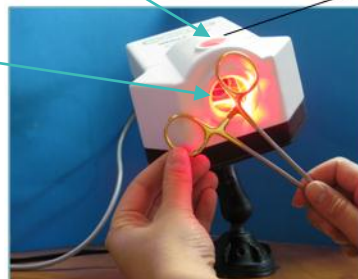
The adjustable base offers the user the flexibility to choose the best working position.



While the instrument is placed in front of the camera lens, the operator can easily center the code, thanks to the **sight window** located on the top of the White Reader® :

The instrument is placed in front of the White Reader®'s camera lens.

The White Reader®'s sight window show the code placement



Operator's vue in the sight window

The reading is automatic as soon as the instrument is placed in front of the reader.

✓ **Starting and utilisation of the White Reader®**

• **Starting :**

As soon as the White Reader®'s mains adaptor is plugged on the power point, the « READY » indicator lights up in green, and then turn in orange. You can't read anything if the indicator is green or off.

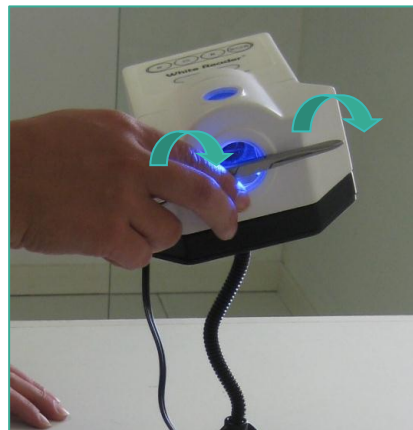
If a data processing software is **already installed on the computer**, and if this one already work with Datamatrix codes, **there is no software to install**.

If the computer has never been connected to a datamatrix code reader, the camera's CD (supplied) must be installed, and the reading must be adjusted fonction to the data processing software's settings. We remain at your full disposition should you have any questions or need any further information about these settings

Therefore the White Reader® is ready to read its first Datamatrix codes.

• **Utilisation :**

Place the codes in front of the camera's lens. Place the instrument on the stainless steel circle of the camera's lens, then **if necessary gently rotate it upward (rotate it between your fingers) in order to reflect the light differently on the instrument. Center the code thanks to the sight window.**



• The 3 lighting colors work according to the following :

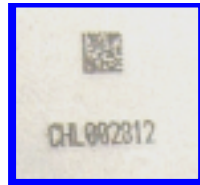
- The **green** lighting permits to read every code engraved with laser.



- The **red** lighting permits to read every code engraved with indent dot marking process, on shiny surfaces (included golden and silvered) and convex surfaces



- The **blue** permits to read codes engraved with indent dot marking process, on mat and flat surfaces.



As soon as the code is decoded by the reader, the green indicators that confirm the reading light up and a beep sound is produced.

After reading, the green indicator turns itself gradually down until off. This allows the operator to confirm easily the instrument reading, **even if other devices around are producing beep sound as well.**

When the beep sound is produced, the character string contained in the datamatrix code is decrypted and directly sent to your data processing software by the wire connected to your computer, whatever the software used.

✓ White Reader® cleaning and maintenance

When the reading window of the White Reader® becomes dirty, use a soft cotton cloth which doesn't give off lint and wipe it carefully. To clean up the reading window, be sure to only use non-aggressive products.

To not scratch the reading window, it is imperative to avoid any contact with materials that could scratch and damage it such as sandpaper or cutting metal products.

Concerning the White Reader®'s body, it is recommended to gently rub it with a cloth soaked of fungicides and bactericides usually used during the sterilization procedure (like Surfianos, Surfac'safe, not containing derivatives of chlorine or aldehyde).

Place the White Reader® in a clean and dry place, in order to not disturb the imaging process and avoid the adverse consequences of the condensation on the device. The temperature of the working room should be between 32 °Fahrenheit and 104 °Fahrenheit (0 degree Celsius and 40 degree Celsius).

In the case of the transfer of the White Reader® from a hospital department to another, make sure to place it on its shipping storage box provided at the reception of the product.

• Prohibited behaviours:

- **Rub the optical surface before taking off the dust particles (risk of apparition of micro-scratches)**
- Reuse several times the same cleaning agent (deposition of soil)
- Submit the White Reader® to a rapid change of temperature
- **Do not spray the cleaning product directly onto the WHITE READER ! Use a damp cloth.**

• Precautions for use

Avoid to look directly in the reading window (window where are placed codes to read)

Never turn off the White Reader® before disconnecting it from the computer. To turn off (or to start) the White Reader®, unplug (or plug) the circular connection at the back of the White Reader®.

Never immerse the White Reader® in a liquid.

Cleaning : respect recommendation of the cleaning paragraph hereabove.

Never hold the White Reader® by its cables.

Use exclusively supplied cables.

Let the White Reader® in a fixed location : the White Reader® is not a portable reading device.

✓ **Summary of the technical properties :**

Performances	
Red LED light	630 nm +/- 30nm
Blue LED light	470 nm +/- 30nm
Green LED light	525 nm +/- 30nm
Codes read	1D : Barcodes 2D: DataMatrix codes
Engraving technologies accepted	Laser & indent dot marking+ infodot
Reading speed capacity	45 codes/second maximum
Unscrambling algorithm	IDMax
Wiring	Fits all computers via a RS232 plug/HID USB cable
Specifications	
Shape	Table workstation
Dimensions (without base)	169mm x 135mm x 91mm
Weight (base included)	1,7 Kg
Link to the computer	wire
Communication with the computer	RS232 connector Female - Male
Power supply	110-220VAC
Power consumption	4 Watts
Material	polyurethane
Consumables necessary	NONE
Operating systems	Windows, linux, Mac OS

- Warranty :

ATH Medical offers a standard warranty, against hidden defects 12 months. The warranty shall start from the day of delivery.

Deterioration, improper use, incorrect installation, any unauthorized changes or any unauthorized repair of the White Reader® will automatically void warranty.

The warranty ceases to exist if the equipment is not been returned in its original packaging with the product documentation included in delivery.

The repairs made during the guarantee contract do not extend the warranty period. The components removed or modified during the refurbishment become the property of ATH Medical.

In all cases, the travelling and shipping costs of the device shall be borne by the user/purchaser.

The shipment and labour costs are excluded of the guarantee.

Repairs during and out of warranty : contact the reseller that sold the product.

Customer department :

Mathieu COTEROT, Research and Development Engineer

mcoterot@implantrack.com

Warranty stamp of ATH Medical :



Warranty start date :

