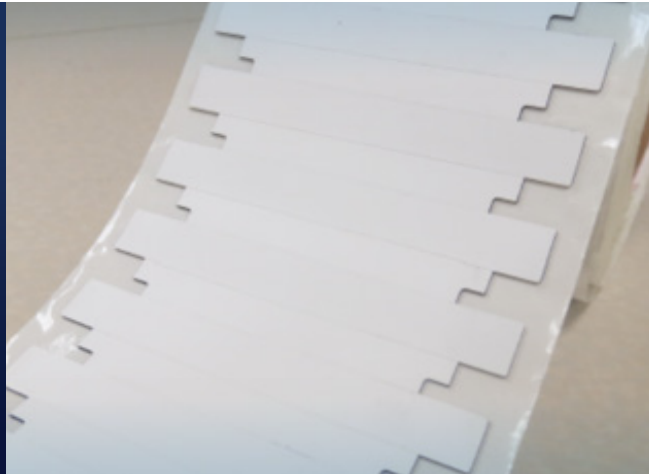


## Omni-ID® IQ 400

Omni-ID IQ 400 Ultrathin labels provide on metal tag functionality, within a low profile, easy to deploy label. The Omni-ID IQ 400 has been optimized for thermal barcode printers, enabling low cost and hassle-free RFID deployment. With its consistency and reliability, the IQ 400 redefines the standard for on metal tagging for applications demanding a very small narrow label.



### Applications

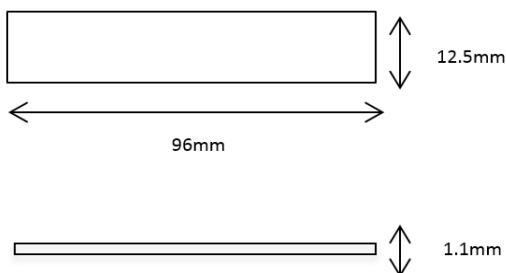
With innovative construction and thermal barcode printer compatibility, the Omni-ID IQ 400 label is ideal for hassle free deployment of RFID applications such as:

- ▶ IT and Office asset tracking
- ▶ Hospital and medical equipment
- ▶ Weapons, pipes, road signs
- ▶ Tools and kitchen assets

### Physical Specifications

|                        |   |
|------------------------|---|
| Material               | White synthetic label   |
| Size (mm) <sup>1</sup> | 96.0 x 12.5 x 1.1 with ground plane<br>96.0 x 12.5 x 1.0 without ground plane   |
| Size (in) <sup>1</sup> | 3.78 x 0.49 x 0.04 with ground plane<br>3.78 x 0.49 x 0.04 without ground plane |
| Weight (g)             | 0.30  |

<sup>1</sup>Product dimensions shown above are the maximum. Batch to batch variation could be within 5%. Unspliced sections will be within 0.2mm tolerance.



Dimensions stated in mm  
Supply format = 1000 labels per roll

### RF Specifications

|                         |                              |
|-------------------------|------------------------------|
| Protocol                | EPC Class 1 Gen2v2           |
| Frequency Range (MHz)   | 866-868 (EU)<br>902-928 (US) |
| Material Compatibility* |                              |
| With ground plane       | Optimized for all materials  |
| Without ground plane    | Suitable for bare aluminum   |

\*See IQ On-Metal Labels User Guide for further detail.

### IC Types

| Read Range with ground plane | Impinj Monza R6-P (standard)                                     | Impinj Monza 4QT (custom option)                          |
|------------------------------|--|---|
| Fixed Reader <sup>1</sup>    | Up to 4.2  | Up to 3.5   |
| Handheld Reader <sup>1</sup> | Up to 2.4  | Up to 2.4   |
| Memory <sup>2</sup>          | EPC - 128(96) bits<br>User - 32(64) bits<br>Unique TID - 48 bits | EPC - 128 bits<br>User - 512 bits<br>Unique TID - 48 bits |

<sup>1</sup>Quoted performance achieved using standard testing methodology on Aluminium test plates. Read range is dependent on multiple factors such as; RFID reader transmit power and receiver sensitivity, asset material and environment. Please see the Omni-ID On Metal User Guide for more detail.

<sup>2</sup>EPC and User memory are reprogrammable. UTID is locked at point of manufacture by IC manufacturer.

## Related Products and Services

- ▶ **Omni-ID IQ 150** – The smallest ultrathin label, easy to deploy and optimized for thermal barcode printers.
- ▶ **Omni-ID IQ 600** – Ultrathin label providing on metal tag functionality, low cost and hassle free deployment.
- ▶ **Omni-ID IQ 800P** – Large premium label for plastic assets.
- ▶ **Service Bureau** – Omni-ID offers a full service bureau for printing and pre-encoding Omni-ID tags at point of manufacture.



## Environmental Specifications

Operating Temperature<sup>1</sup> -40 to +85°C

Max Temperature Exposure<sup>1</sup> -40 to +85°C

Application Temperature<sup>1</sup> +18 to +35°C

IP Rating IP68

Attachment Self-adhesive suitable for curved surfaces to a minimum radius of 58mm

Certifications



RoHS approved  
CE approved

Printer Compatibility<sup>2,3</sup> Sato, Zebra, Honeywell

Warranty 1 year

1. Excludes adhesive options, consult adhesive data sheets for recommended temperature ratings.
2. Omni-ID labels are compatible with many leading printers. Contact us for more detail.
3. See Omni-ID printer guides for details on calibrating and operation.

See the **IQ On Metal Labels User Guide** for details on available IC & Ground Plane product options.

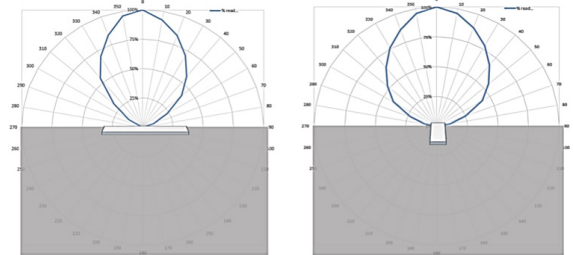


Omni-ID office locations: **US | UK | China | India | Germany**

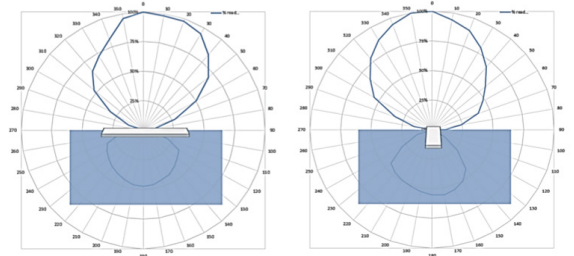
For product or technology inquiries email: [sales@omni-id.com](mailto:sales@omni-id.com)

## Radiation Patterns

On Metal



On Liquid



## Ordering Information

Order Numbers 141 – EU, US with Monza R6-P  
142 – EU, US with Monza 4QT (custom)

Order Options: :303 Customization - 4 color static print  
:315 Overlamination  
:329 Without ground plane  
:701 (Standard Service Bureau)

Supply Format 1000 labels per roll

| Minimum Order Quantity | R6-P          | M4QT (custom) |
|------------------------|---------------|---------------|
| Standard label         | 1000 labels   | 10,000 labels |
| Service bureau         | 1000 labels   | 10,000 labels |
| Customization          | 10,000 labels | 10,000 labels |
| Overlamination         | 10,000 labels | 10,000 labels |