

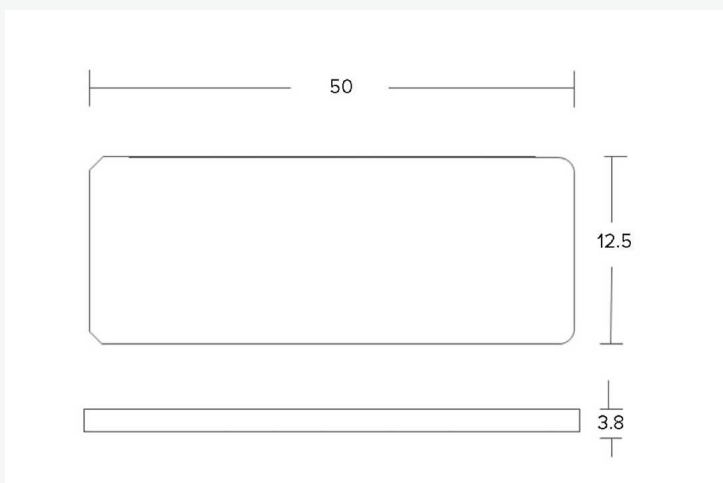
[Products] you can identify with



Physical Specifications

Material	White synthetic label with transparent over laminate
Size	50 x 12.5 x 3.8 mm 1.9 x 0.49 x 0.14 in
Weight (g)	0.85
Attachment	Film adhesive (STD)

Dimensions



Measurements shown in mm

Flex 600

The Flex 600 is a low profile, small form factor RFID tag designed specifically for attachment to office equipment, IT assets or RTI's. With its superior RF performance, this tag excels in portal applications where the read range can be expanded. In addition, the Flex 600 tag is well suited to indoor applications where a low-cost option is needed.

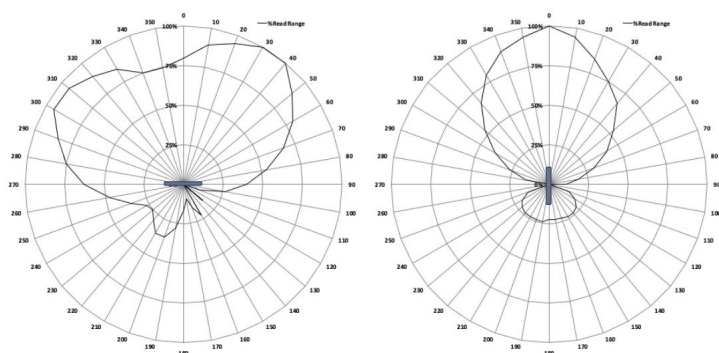
RF Specification

Read Range - Fixed Reader	Up to 6m (19.68 feet)
Read Range - Handheld Reader	Up to 3m (9.84 feet)
On Metal or Balanced	Optimized for metal
Material Compatibility	Metal
IC Type (Chip)	Monza R6-P
Memory	EPC - 128 (96) bits User - 32 (64) bits Unique TID - 48 bits

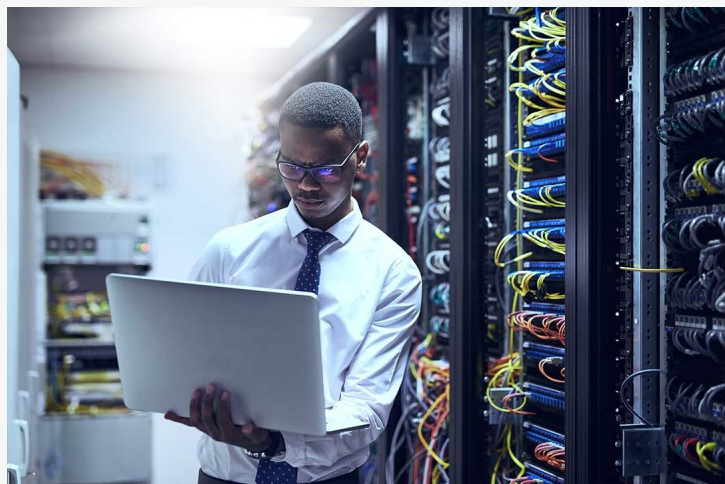
EPC and User memory are reprogrammable. UTID is locked at point of manufacture by IC manufacturer.

Radiation Patterns

On Metal



[Products] you can identify with



With a small footprint and consistent RF performance, the Flex 600 is ideally suited to applications such as:

- Office equipment
- Portals
- Light outdoor use

Environmental Specifications

Operating Temperature	-40°C to +85°C
IP Rating	IP68

Certifications



Ordering Information

Warranty	1 year
Part Number / Order Codes / Order Numbers	EU -CP 14622
	US - CP14623
Supply Format	380 labels / roll